



GMT MONTHLY MEMBERSHIP PROGRESS REPORT

Results as of: 8/31/2018

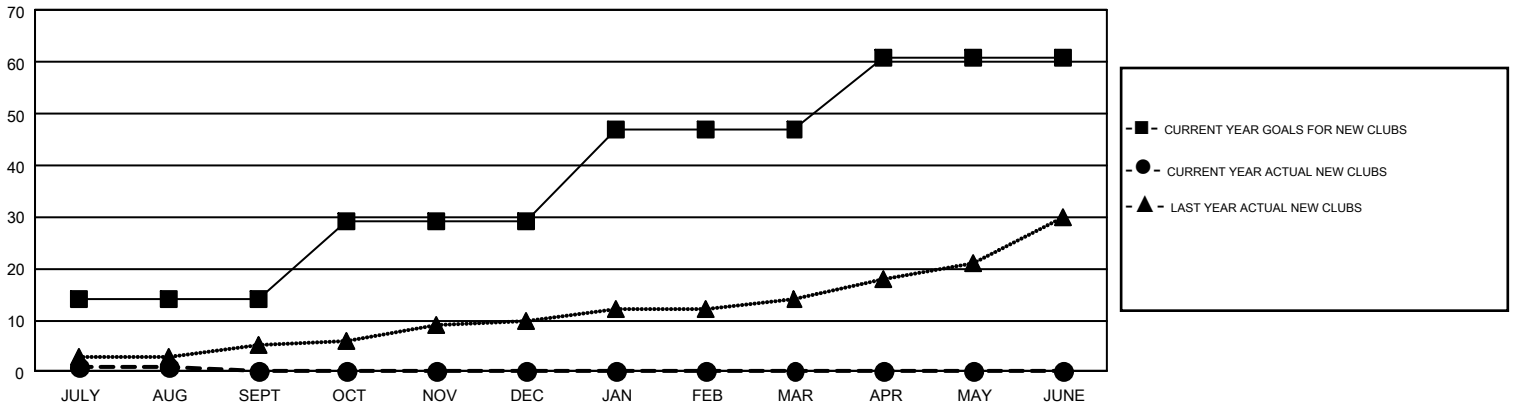
GMT Constitutional Area 1, Group F

GMT: GREGORY GILLIAM

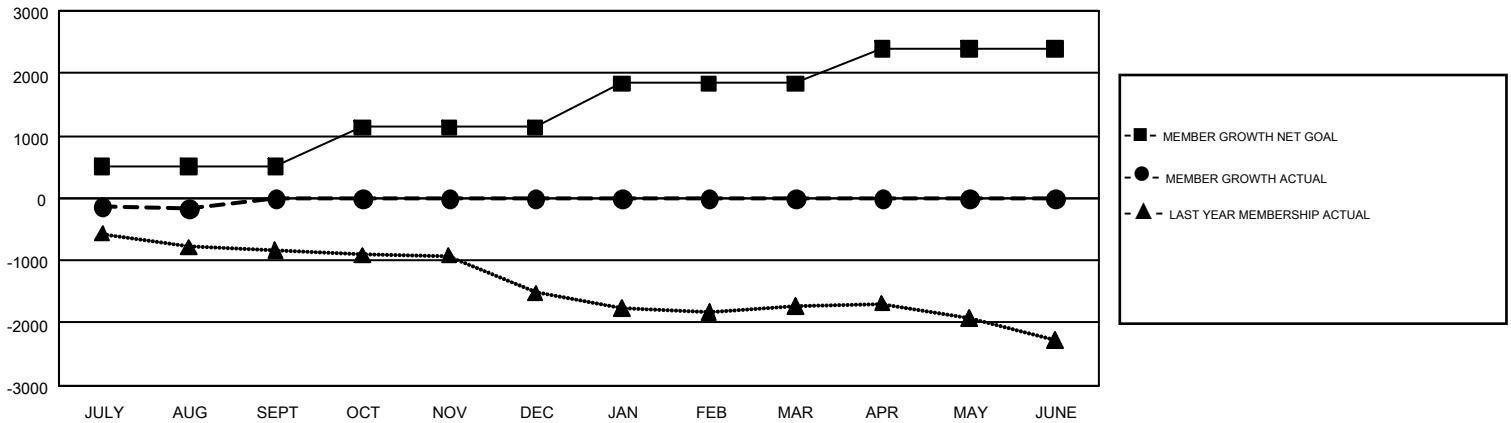
REPORT DOES NOT INCLUDE CLUBS IN UNDISTRICTED AREAS.

Clubs				Members			
RESULTS FOR 2018-2019				RESULTS FOR 2018-2019			
QUARTER	NEW CLUB GOAL	NEW CLUBS	DROPPED CLUBS	QUARTER	MEMBER GROWTH NET GOAL	MEMBER GROWTH ACTUAL	DROPPED MEMBERS ACTUAL (including transfers)
JULY/AUG/SEPT	14	1	7	JULY/AUG/SEPT	512	859	897
OCT/NOV/DEC	15	0	0	OCT/NOV/DEC	625	0	0
JAN/FEB/MAR	18	0	0	JAN/FEB/MAR	701	0	0
APR/MAY/JUNE	14	0	0	APR/MAY/JUNE	560	0	0

GOALS AND ACTUAL NEW CLUBS CUMULATIVE



GOALS AND ACTUAL MEMBERS CUMULATIVE



DROPPED CLUBS: 7	362 CLUBS OF 1,603 ADDED 1 OR MORE NEW MEMBERS	GENDER DISTRIBUTION MALE 29,704 (66.97%) FEMALE 14,651 (33.03%)
DROPPED MEMBERS DECEASED 77 CLUB CANCELLED 9 OTHER 810 <hr/> TOTAL 896	CLICK HERE FOR CUMULATIVE MEMBERSHIP DATA	TOTAL FAMILY UNIT MEMBERS 7,040 FAMILY MEMBERS PAYING HALF DUES 3,605